



Richmond College
සිලි වාං ජනිතයා - 2020
First Term Test - 2020

Mathematics

Time – 1 hour 30 min.

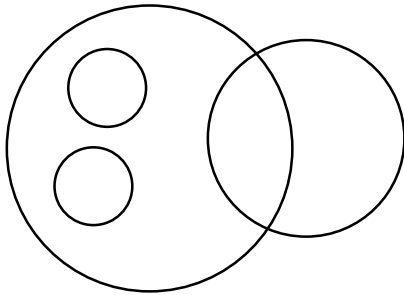
Name / Index No :

Grade 6

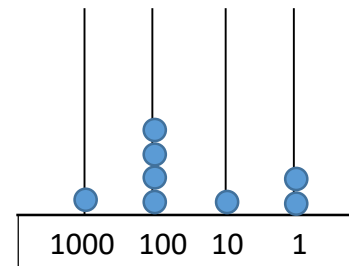
Part I

*** Answer for all questions on paper it self.**

(01) How many circles are there in this figure.



(02) What is the value represented by the digit on the hundred place of abacus.



(03) Write these numbers in ascending order.
 -2, 0, -5, 4

(04) Find the value.
 40×38

(05) The population of certain country in the last year is “ Eight million eighty thousand five hundred four” write that number in digit form.

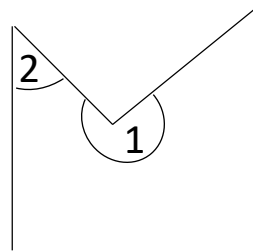
(06) Fill in the blanks.

$$\begin{array}{r} \square \quad \square \quad \square \\ + \quad 6 \quad 3 \quad 7 \\ \hline 8 \quad 7 \quad 6 \end{array}$$

(07) Name the type of angle.

1 =

2 =



(08) Write 205 seconds in minutes and seconds.

(09) Write all the integers between -3 and 2.

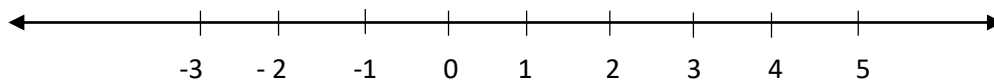
(10) Simplify $4085 + 273 + 28$

(11) What is the opposite direction to the North ?

(12) A certain number is multiplied by 100 and divided by 10 then the answer is 320.what is that number ?

(13) The present students of a certain school on a rainy day is 478 . Round off this to the nearest 10.

(14)



Mark following points on the number Line.

$$A = -3 \text{ and } B = 4$$

(15) What is the amount received to a person . if 3248 rupees divide equally among 8 persons.

(16) Fill the blank cage

$$30 \times \square + 5 = 3005$$

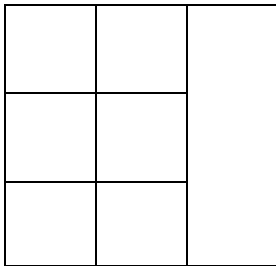
(17) Write in words.
24 000 052 000

(18) Choose and write the suitable value in the blank.

$$-3 < \dots (-7, -5, -2)$$

(19) 04th February of 1882 “ write this date in. Standard international form.

(20) How many squares in this figure.



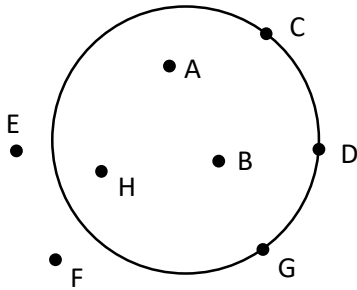
(20 x 2 = 40 Marks)

Part II

(12 x 5 = 60 Marks)

* Answer for Five questions only

(01) (a)



- I. Name two points which are on the circle
- II. Name three points which are in the circle

(b) The number '14865',

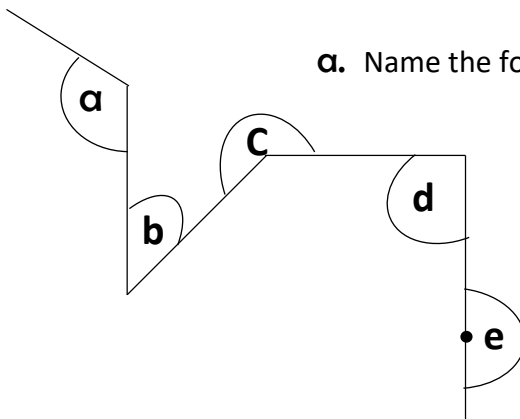
- I. Represent on an abacus.
- II. What is the place value of digit 8 ?
- III. What is the value represent by the digit 4 ?

(02) The number of persons who visited an exhibition during 3 days as follows.

Date	Friday	Saturday	Sunday
Number of persons	1428	2335	1278

- I. Find the total number of persons who visited the exhibition in three days.
- II. If 1849 Females visited the exhibition find the number of male visitors.
- III. If the entrance fee is Rs.100 per person find the total income received during the three days.
- IV. If the total income is divided equally among the 20 organizers find the amount received to a person.

(03)



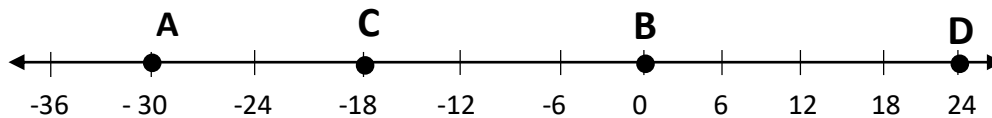
a. Name the following angles.

- I. α =
- II. β =
- III. γ =
- IV. δ =
- V. ϵ =

b.

- I. Write the letter of the highest angle out of the angles a and c
- II. Name two types of angles which are greater than a right angle.

(04) Answer according to the following number Line.



- I. What is the letter that represent highest value.
- II. What is the letter that represent lowest value.
- III. Find the value of $D - B$ (subtract two values)
- IV. Write A , B , and C in ascending order.
- V. Join B and C using the signs $>$ or $<$.

(05) In the annual trip of grade 06 the bus left the school at 5.45 a.m. and returned back at 10.20 p.m.

- I. Write the arrival time in standard form.
- II. What is the elapsed time to the journey.
- III. If the total participants to the trip is 338 round off that is to the nearest 10.
- IV. If the rounded off value of the number of students travelled in a bus is 50 , what could be the maximum number of students in that bus?
- V. Show that A Student who left the home at 4.50 a.m. and travelled during 1 hour and 30 minutes to reach the school, could not participate to the trip.

(06) The population of three countries as follows.

A - 3400321583

B - 102184031

C - 60030000

- I. What is the country with minimum population.
- II. Separate the population of country A into zones.
- III. Write the population of country B in words.
- IV. Write the population of country C in words.